



ARKANAHOMES



HAVEN OVERLOOK

4078 WESTBROOK RD | SUWANEE, GA



CONTENTS

- 1-4 OUR HISTORY
- 5 HAVEN OVERLOOK LOCATION
- 6. HAVEN OVERLOOK COMMUNITY
- 7-9. CHELSEA
- 10-12. KENSINGTON
- 13-15. MAYFAIR
- 16-18. ST JAMES
- 19. SITE PLAN
- 20. FEATURES & SPECS
- 21. CONTACT US



OUR HISTORY

25 YEARS OF BESPOKE SERVICE.

WELCOME TO ARKAN HOMES, BUILDERS OF ENDURING QUALITY HOMES. WITH A PROUD 25-YEAR HISTORY, WE ARE PART OF A GENERATIONAL LEGACY THAT HAS CONSTRUCTED THOUSANDS OF HOMES IN MASSACHUSETTS. WE ARE NOW BRINGING OUR EXPERTISE TO THE METRO ATLANTA AREA.

ARKAN HOMES IS DEDICATED TO BUILDING MEMORABLE LUXURY HOMES WITH UNIQUE, INNOVATIVE DESIGNS. OUR BESPOKE SERVICE AND CUSTOMER-FIRST APPROACH SET US APART. OUR EXPERIENCED TEAM IS COMMITTED TO WORKING WITH YOU AT EVERY STEP, ENSURING YOUR SATISFACTION

☎ +1 (404) 666-5688

✉ info@arkanhomes.com

📍 4555 Mansell Road, STE 300,
Alpharetta, GA 30022

🌐 www.arkanhomes.com

PORTFOLIO

CRABAPPLE | ROSWELL



EDINBURGH | SUWANEE



+1 (404) 666-5688

4555 Mansell Road, STE 300,
Alpharetta, GA 30022

info@arkanhomes.com

www.arkanhomes.com

PORTFOLIO

EDINBURGH | SUWANE



EDINBURGH | SUWANE



+1 (404) 666-5688

info@arkanhomes.com

4555 Mansell Road, STE 300,
Alpharetta, GA 30022

www.arkanhomes.com

PORTFOLIO

INTERIORS



☎ +1 (404) 666-5688

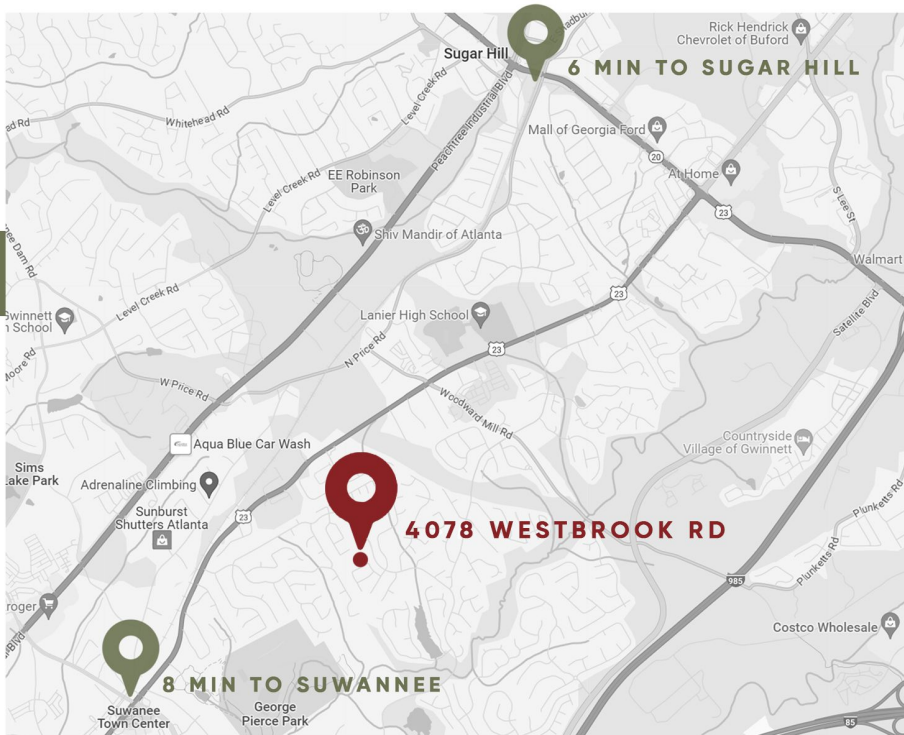
📍 4555 Mansell Road, STE 300,
Alpharetta, GA 30022

✉ info@arkanhomes.com

🌐 www.arkanhomes.com

HAVEN OVERLOOK LOCATION

HAVEN OVERLOOK, LOCATED IN THE DESIRABLE SUWANEE AREA, BOASTS 13 UPSCALE RESIDENCES NEAR TOP-TIER SCHOOLS. ENJOY LOCAL DINING, SHOPPING IN **DOWNTOWN SUWANEE OR SUGAR HILL**, LEISURE TIME AT LAKE LANIER ISLANDS, AND EXPLORING NUMEROUS TRAILS AND PARKS.

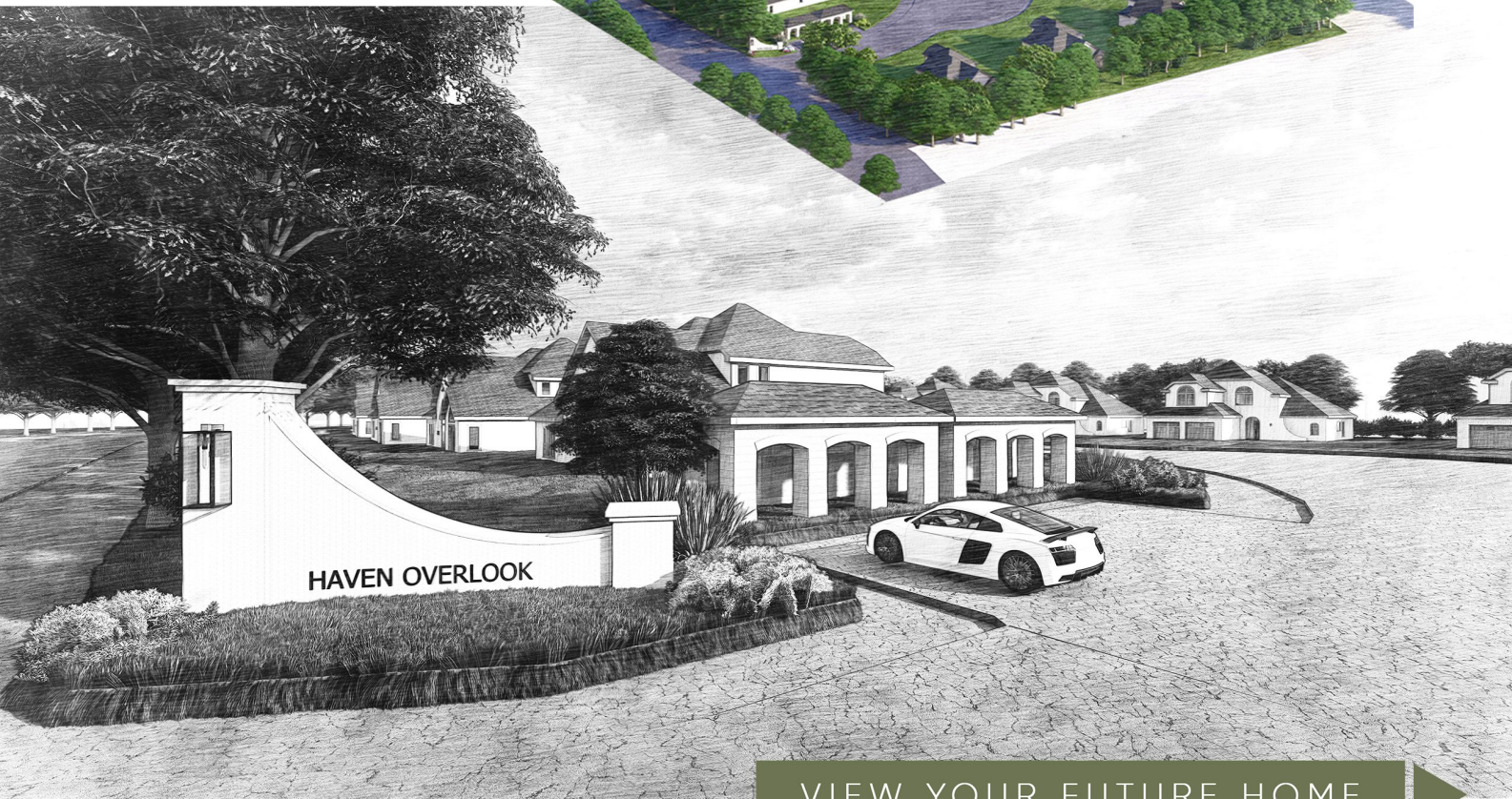


HAVEN OVERLOOK CENTER

EACH RESIDENCE IN THIS UPSCALE COMMUNITY HAS BEEN METICULOUSLY DESIGNED BY OUR TALENTED IN-HOUSE ARCHITECT, SARA SOURIS. HER MODERN OPEN PLANS, COUPLED WITH THOUGHTFULLY CRAFTED EXTERIOR DESIGNS, SEAMLESSLY COMPLEMENT THE STREETScape.

AS A PURCHASER, YOU HAVE THE PRIVILEGE OF UTILIZING OUR INTERIOR DESIGN CENTER. HERE, YOU CAN SELECT AND CUSTOMIZE ALL YOUR FINISHES AND COLOR SCHEMES TO TRULY MAKE THE SPACE YOUR OWN. OUR ON-SITE SALES MANAGERS, WHO ARE WELL-VERSED IN GUIDING YOU THROUGH EVERY STEP OF THE PROCESS, WILL BE READILY AVAILABLE TO ASSIST YOU.

STARTING FROM THE \$900'S



VIEW YOUR FUTURE HOME

CHELSEA

5 BD | 4.5 BA | 3,800 SQ



ELEVATION A



ELEVATION B

CHELSEA

FIRST FLOOR PLAN



CHELSEA

SECOND FLOOR PLAN



KENSINGTON

4 BD | 4.5 BA | 3,200 SQ



ELEVATION A



ELEVATION B

KENSINGTON

FIRST FLOOR PLAN



KENSINGTON

SECOND FLOOR PLAN



MAYFAIR

5 BD | 4.5 BA | 4,300 SQ



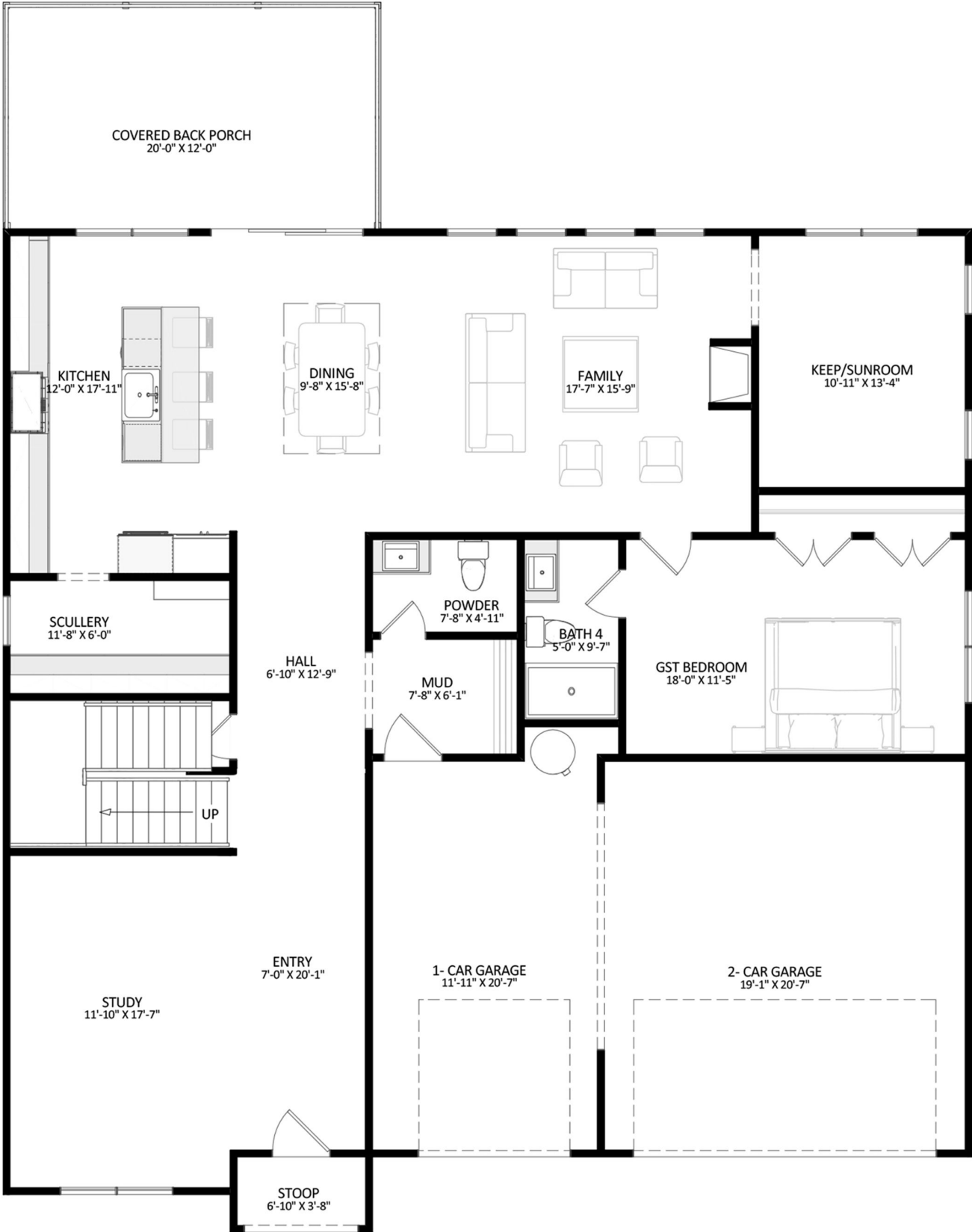
ELEVATION A



ELEVATION B

MAYFAIR

FIRST FLOOR PLAN



MAYFAIR

SECOND FLOOR PLAN



ST JAMES

4 BD | 3.5 BA | 3,600 SQ | OWNERS SUITE ON MAIN



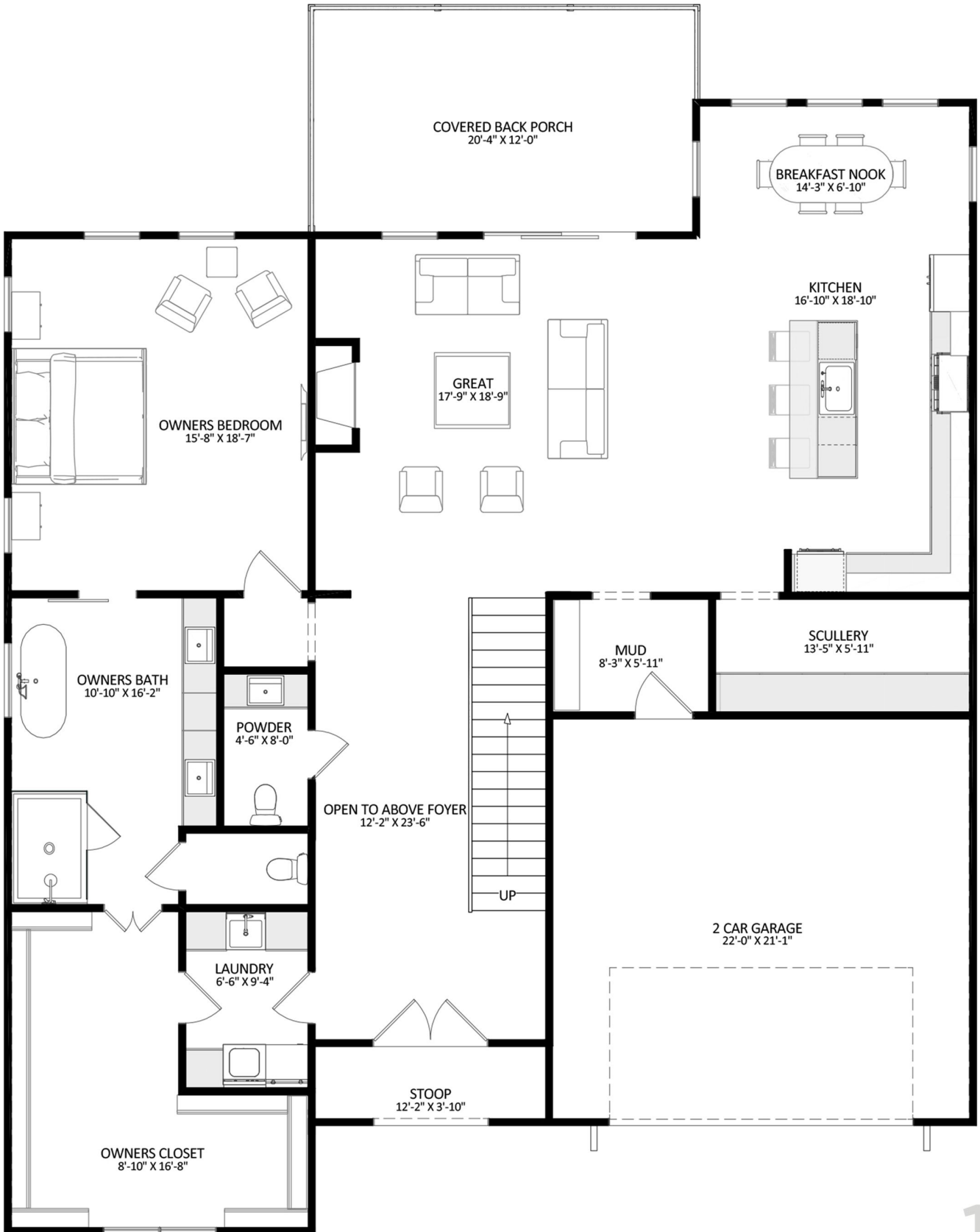
ELEVATION A



ELEVATION B

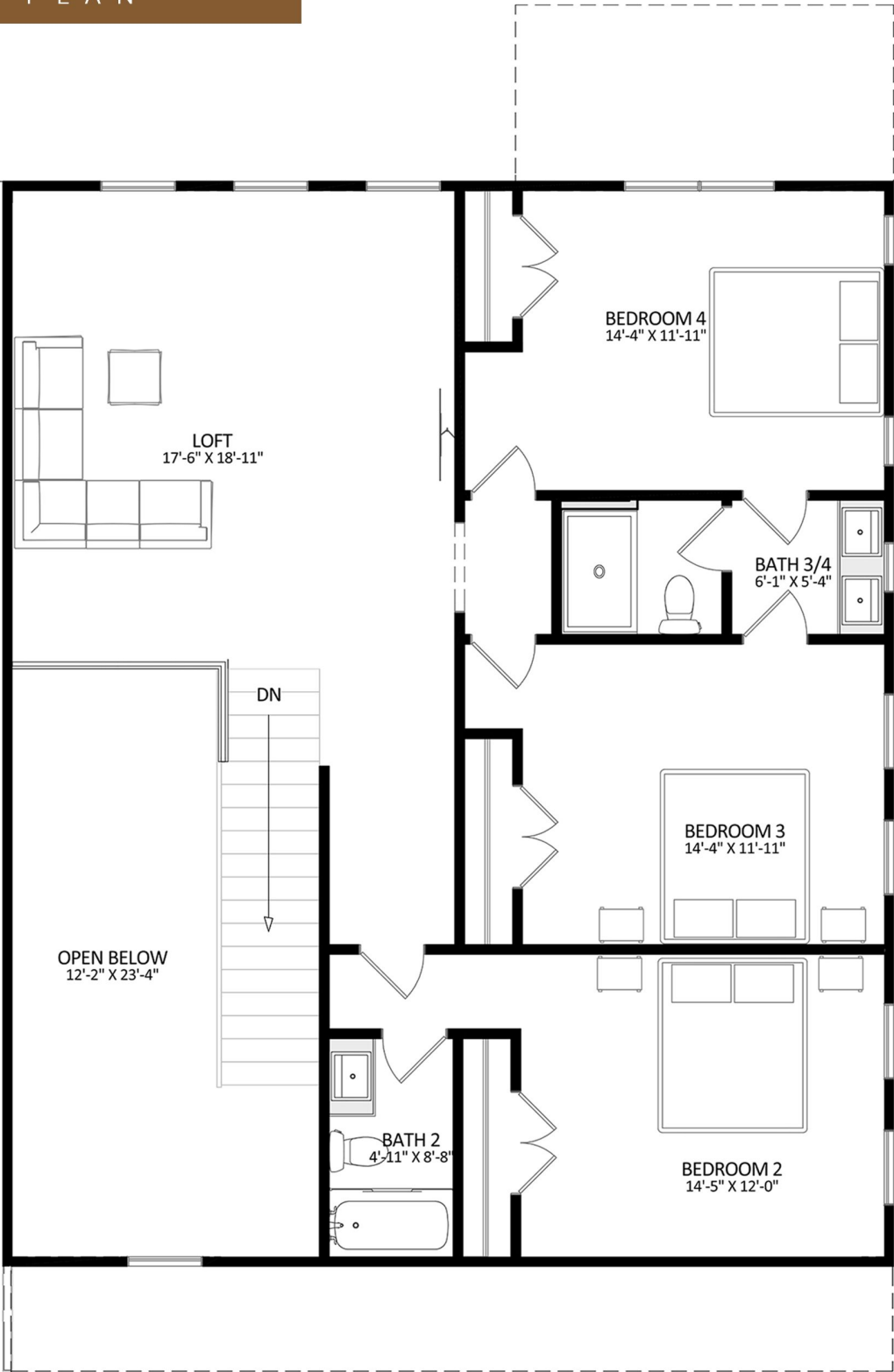
ST JAMES

FIRST FLOOR PLAN



ST JAMES

SECOND FLOOR PLAN



HAVEN OVERLOOK

13 LOTS



ARKANHOMES



LEGEND:

- .B -> BASEMENT LOT
- .S -> SLAB LOT

LUXURY FEATURES

HAVEN OVERLOOK

EACH PLAN HAS BEEN CAREFULLY DESIGNED TO FIT TODAY'S NEEDS INCLUDING:

- HIGH CEILINGS-10' FT ON MAIN LEVEL
-9' FT ON UPPER LEVEL
- INSTANT GAS HOT WATER HEATER
- HIGH EFFICIENCY WINDOWS BLACK/BRONZE EXTERIOR WITH WHITE INTERIOR
- UPGRADED APPLIANCE PACKAGE Z LINE
- CUSTOM CABINETRY AND DESIGN
- QUARTZ COUNTERTOPS THROUGHOUT
- OVERSIZED KITCHEN ISLAND
- SPACIOUS SCULLERY
- 2/3 CAR GARAGE OPTIONS AVAILABLE
- SQUARE FOOTAGE RANGING FROM 3000-4000 TO FIT YOUR NEEDS
- COVERED BACK PORCH
- TWO FEATURE WALLS
- SLIDER PORCH DOORS



ARKANHOMES



CONTACT US



HOME BUILDERS GROUP



homebuildersgroup.com



Joan Hertz

OWNER

+1 (770) 527-1844

joanhertz2014@gmail.com

Joan Hertz has more than 35 years of experience in new home sales and sales management. She has an extensive background in general real estate, first obtaining her real estate license in 1982. Over her career, Joan has been recognized for her sales success, particularly in the new homes arena. She was named a Top New Home Sales Agent for twenty years, has previously been voted the Top Georgia New Homes Sales Person and is a Phoenix Award recipient recognizing two decades as a top producer in metro Atlanta.



Michelle Healy

REALTOR®, NEW HOME SALES

+1 (678) 549-6111

michelle1healy@yahoo.com

Selling new home communities and resale homes since 2016, Michelle has been named the Top Sales Producer 10-15 Million Plus category for three years in a row 2019, 2020, & 2021. Michelle has had the pleasure to work with Coldwell Banker, Prestige Brokers, and now Home Builder's Group of Georgia. Her years of experience has been with the following prestigious builders and their communities that she was the onsite agent for: HRC Construction, Kittle Homes, Stonecrest Homes, Brent Boyd Custom Homes, and Arkan Homes.